



# Corporate Fact Sheet

The role of IT is undergoing a massive change of seas: No longer seen as just a necessary cost to keep things afloat, the new IT teams, led by business-minded CIOs, provide the company with the foundation to deliver growth, productivity, and agility that contributes to the bottom line. This new approach to enterprise technology creates real opportunities to increase business efficiency and company revenue, while reducing cost and risk.

Juriba's IT Transformation management platform gives these new, innovative CIOs a central command & control center to execute their vision for change. Whether that means operating system upgrades, moving to the latest email system, or migrating to cloud platforms, centralized, asset-level logistics and readiness is provided, alongside management of ongoing initiatives such as Evergreen IT and Virtual Desktop Infrastructure. For more information, visit our website [www.juriba.com](http://www.juriba.com).

## Juriba's Story

Juriba was founded by Barry Angell and Julia Bell after they experienced first-hand that managing multiple IT projects across an increasingly complex end-user estate results in an upward spiral of cost and inefficiency. Management through spreadsheets is simply no longer effective for the enterprise.

IT teams embarking on anything from a simple hardware refresh to a large-scale IT transformation often reinvent the wheel with each new project, learning little or nothing from previous experiences. This slow start eats significantly into the project budget without producing results or even a strategy for completion.

Frustration from senior management forces a shift into tactical mode rather than strategic delivery, typically resulting in a project which takes longer and costs more than it should have.

## Juriba's Mission

Juriba's mission is to disrupt this repeating cycle by building an intuitive yet powerful software platform from which projects can quickly be established with minimal effort, via a modern web interface. Juriba's software is designed to reduce the pain of enterprise IT migration.

Whether you are a customer running the migration internally, or a service integrator running the project on behalf of a customer, a consistent, authoritative and single source of truth will drive better, faster and more accurate project decisions.

Juriba's approach combines software with a slim layer of services to guide you through your IT migration project. Direct customers benefit from Juriba's IT migration skill and experience, coupled with enterprise class software to build a best practice migration workflow and execution tracking system for their project.

For service integrators, this is a repeatable mix of tools and processes that can be applied again and again to de-risk and accelerate project delivery, yields predictable results and transparent reporting with reduced cost and startup time.

## At A Glance

- Founded in 2008
- Headquartered in London, UK with satellite offices all around the world
- Juriba's flagship product, Dashworks, has been used to ready more than 7 million assets for migration
- Dashworks is an integrated set of data warehousing and project management software that allows IT teams to manage one-time IT migration projects as well as ongoing Evergreen IT efforts

## Milestones:



# Why Enterprises & System Integrators Chose Juriba

Most organizations spend a large portion of their migration budget on project managers and business analysts as their projects are managed traditionally and manually, with instantly out-of-date spreadsheets and high maintenance databases. In contrast, by using Juriba's data warehousing and project management software, you can reduce project management overhead significantly as well as improve efficiency in every aspect of your IT migration planning and delivery. This approach enables you to deliver your IT migration on time, on budget and with a legacy of dynamic information to use for generations of projects to come.

## One Version of the Truth

Juriba software provides a single source of truth for the migration project and a single pane of glass through which to view it. By managing the entire IT transformation project lifecycle using a single platform, enterprises can make fact-based decisions that accelerate adoption of the latest technology, and deliver projects on time and within budget.

## Improve The Return on Investment of your IT Transformation Projects

Many IT projects suffer from resource bloat, running over budget and over time. Juriba's Dashworks software solution enables enterprises to gain visibility and control of IT project status, thus reducing project costs by an average of 15%.

Utilizing a single platform, project managers can bring together all critical elements of a project: business intelligence, inventory, rationalization, readiness tracking, scheduling, workflow and end-user communications. Working from the same dashboards and in real-time allows resources to be efficiently managed and directed.

### Our Customers:

- Mix of direct customers (22%) and Service Integrator led projects (78%)
- 5 of the top 10 investment banks have used Dashworks to successfully manage desktop and mailbox migration projects
- Customers span all industry sectors: Automotive, Banking, Chemicals, Communications, Energy, Entertainment and Media, Financial Services, Government and Public Services, Healthcare, Insurance, Pharmaceuticals, Retail, Technology, Transport & Logistics

### Our Partners:

- 3 of the top 10 IT companies in the world have standardized on Juriba Dashworks for their IT migration project delivery
- Juriba partners with both service integrators and software technology companies alike to provide a holistic approach to IT migration project planning and execution
- Microsoft Gold Partner - Worldwide agreement with Microsoft Services to enable MS consultants to utilize Dashworks to help deliver Windows 10 assessment, readiness, and project services to customers
- Other IT Service partners include HPE, Deloitte, Fujitsu, Atos, Wipro, HCL, WWT
- Software partners include BDNA, Landesk, Dell, Lakeside, BinaryTree, and many more

# Dashworks Benefits

Dashworks is a revolution for IT project managers. No longer do they need to spend 50-60% of their time managing spreadsheets containing tens of thousands of rows of infrastructure and asset readiness data - Dashworks does that job for them. Now they can concentrate on managing budgets, reducing business disruption, driving efficient logistics and accelerating project delivery.

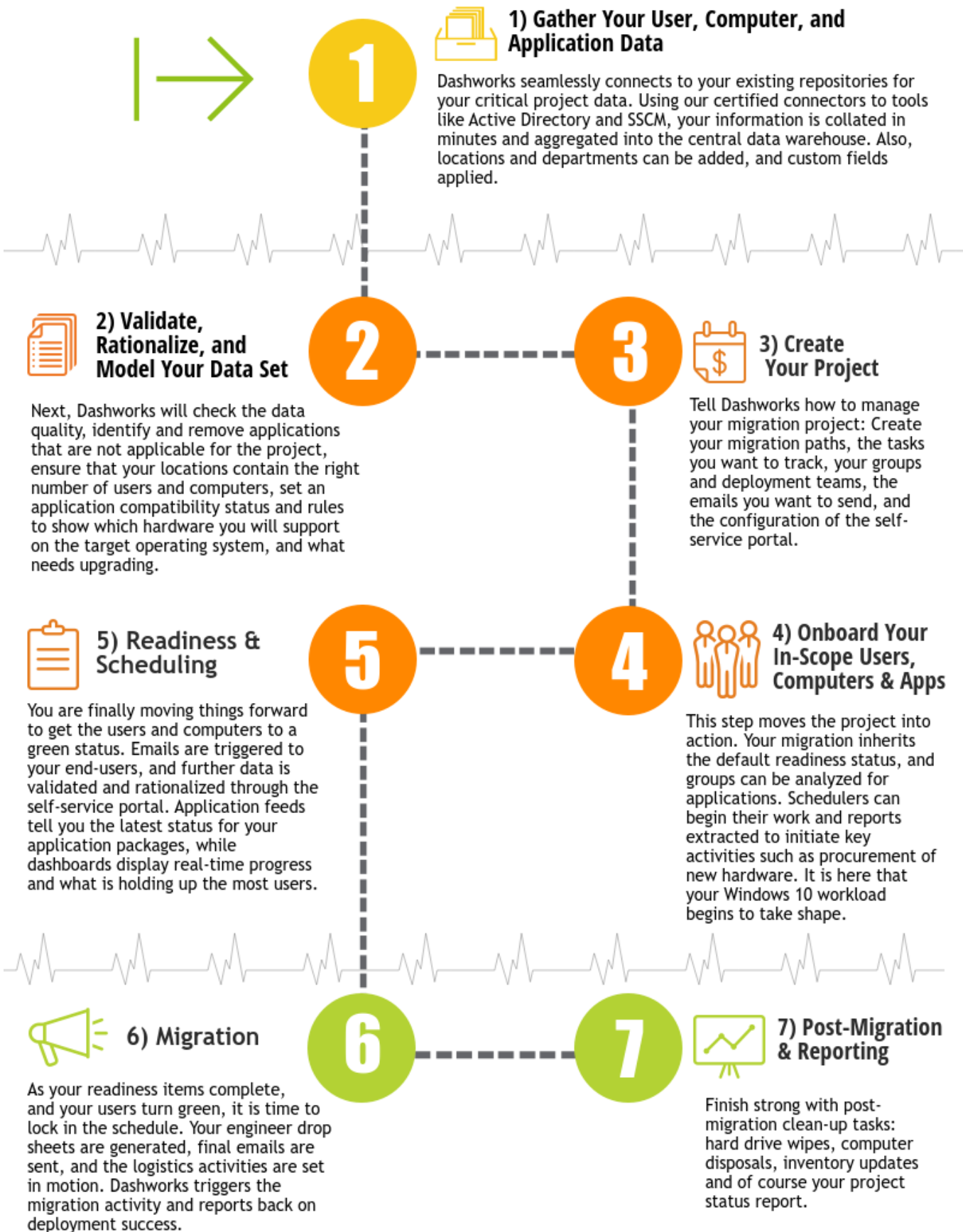
- **Your IT Migration Project, Your Way** - Flexible project creation and task management means total asset migration readiness control for your project managers
- **Single Source of Project Truth** - One place from which to manage, maintain and control thousands of project activities to drive resource efficiency
- **Better Business Engagement** - Self-service data validation and scheduling for site champions and end users plus automated email communications
- **Asset Migration Readiness Simplified** - Dynamic traffic light analysis for your in-scope assets
- **Reduced Project Management Spend** - Save 30% over manual spreadsheet methods with dynamic real-time dashboards and real-time data update
- **More Accurate Project Decisions** - Drive project prioritization through 'what if' impact analysis and easy identification of project blockers
- **Increased Orchestration** - Automation takes the pain away from common project tasks. For example, sending tonight's migration list to third party deployment tools
- **Better Reporting** - Real-time dashboards, dynamic data extracts, and pre-canned reports give you greater project reporting flexibility

## Dashworks Use Cases:

- Windows 10 Migration
- Desktop Virtualization
- Hardware Refresh
- Application Virtualization
- Active Directory Migration
- SCCM Migration
- Application Migration
- Email Migration
- Office 365 Migration
- Server Migration
- Data Center Migration
- Mergers & Acquisitions
- Divestitures
- Mobile Device Upgrades
- Skype For Business
- SoftPhone Migration
- Evergreen IT



# How It Works



# Dashworks

Dashworks consists of two major components: Dashworks Analysis and Dashworks Projects. While Dashworks Analysis builds the foundation and is a mandatory module, you can choose up to three Dashworks Projects modules depending on your needs: Desktop, Email & Collaboration (including Office 365) and Data Center.

## Dashworks Analysis

Before any project manager can tackle any IT migration project, they need to understand what their software and hardware estate looks like today. Dashworks Analysis is the data warehouse which serves as your dynamic baseline for all of your critical user, computer, application, mailbox, server and mobile device information. You can analyze and create "what-if" scenarios, view the data in one central command & control center and aggregate it in reports and dashboards.

Dashworks Analysis System is robustly built to support all your data warehousing needs:

- Supports multiple connectors to common data repositories and CSV import standards
- Leverages mature ETL process and incremental/parallel methods for speed
- Includes intelligent data aggregation and cleansing techniques
- Intelligent search facility, multiple dashboards (ability to drill, cut, slice and dice data, and the ability to quickly identify asset compatibility)



## Dashworks Projects



Dashworks Projects provides your IT migration team with the ideal platform to create the workflows, processes, communications and reports to manage your IT transformation projects from inception to completion.

The Project System is available in three modules: Desktop, Email & Collaboration (including Office 365) and Data Center. Each can be used for a variety of scenarios.



## Contact Us

**Juriba Limited United Kingdom**  
20 Downs Valley  
Hartley, Longfield, Kent, DA3 7RA,  
United Kingdom  
UK: +44 207 873 2225

Email: [info@juriba.com](mailto:info@juriba.com)

**Juriba Limited United States**  
30 Newbury Street, 3rd Floor  
Boston, MA 02116,  
United States  
US: +1 617 356 8681

<http://www.juriba.com/>